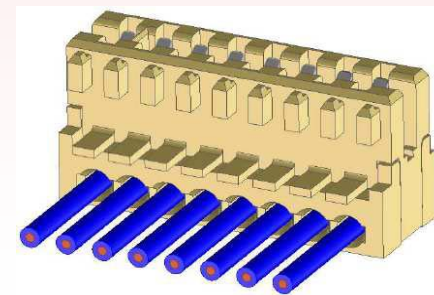
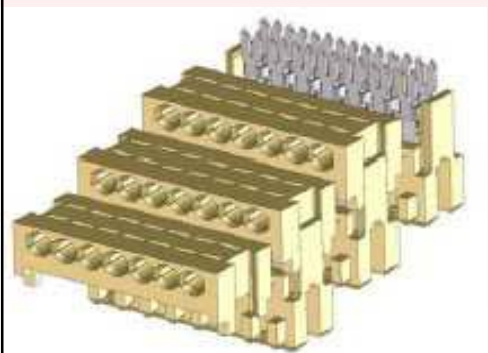


KMI

WIRE PROCESSING TECHNOLOGY

IDC MACHINE

molex[®]



InTeCon

Innovative Technology for Connectors



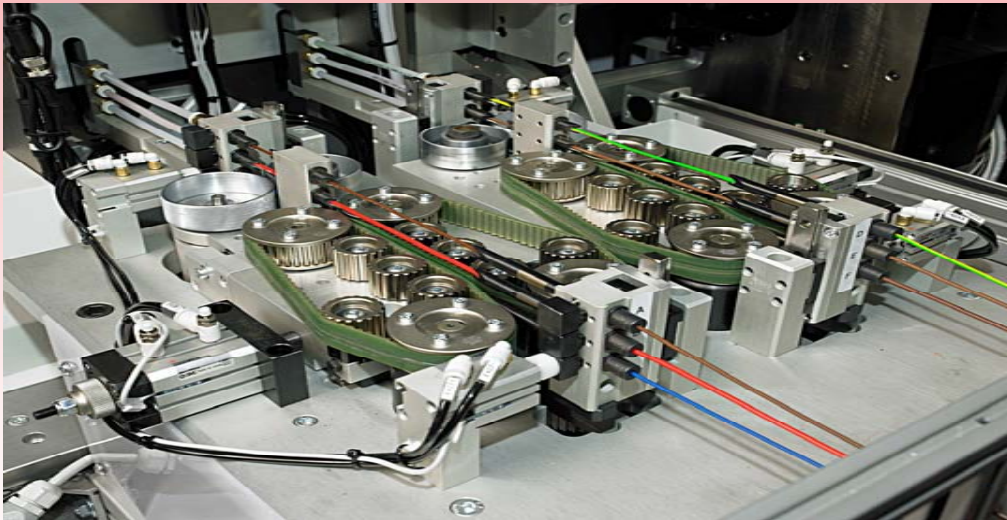
molex[®]



WIRE FEEDING SYSTEM

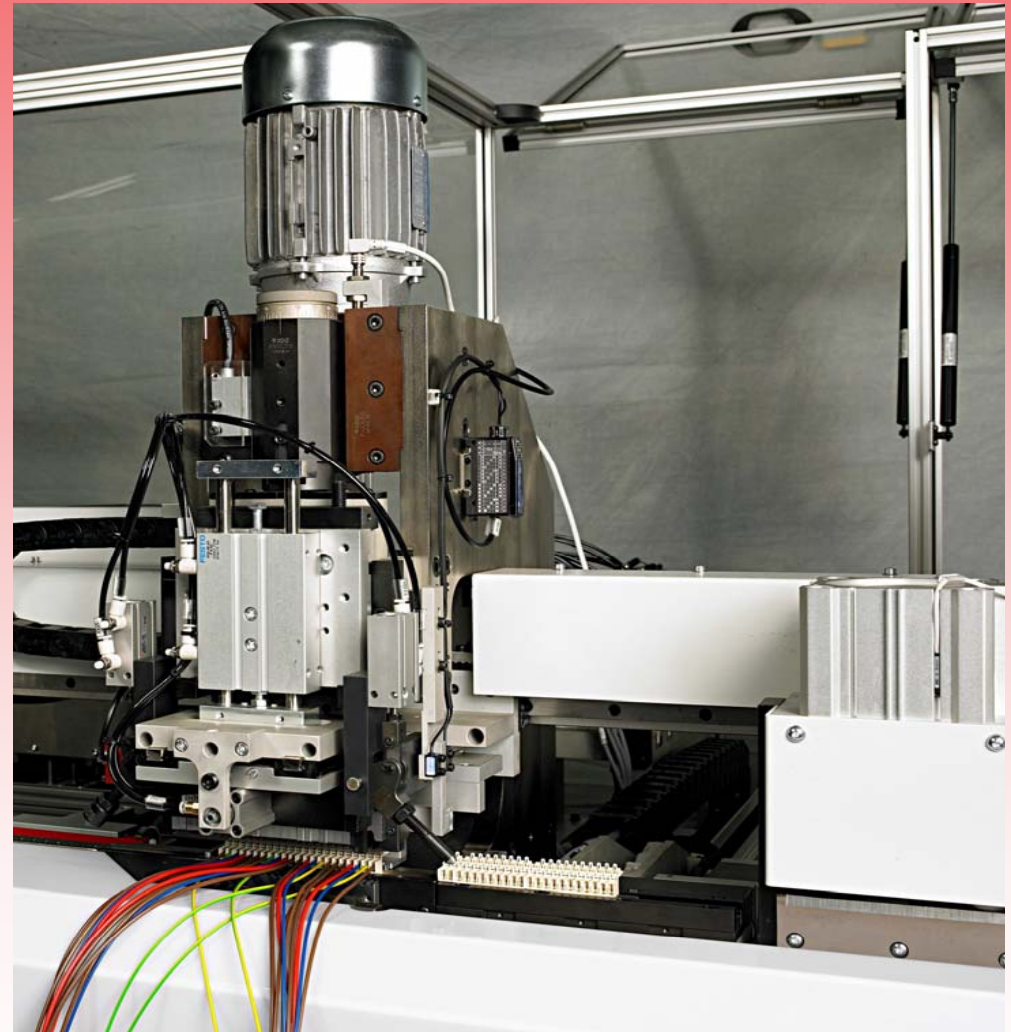
- **DOUBLE WIRE FEEDING** system
- **FEEDING** system 3+3 WIRES for different colours and/or sections

- **WIRE PREPARATION STATION**



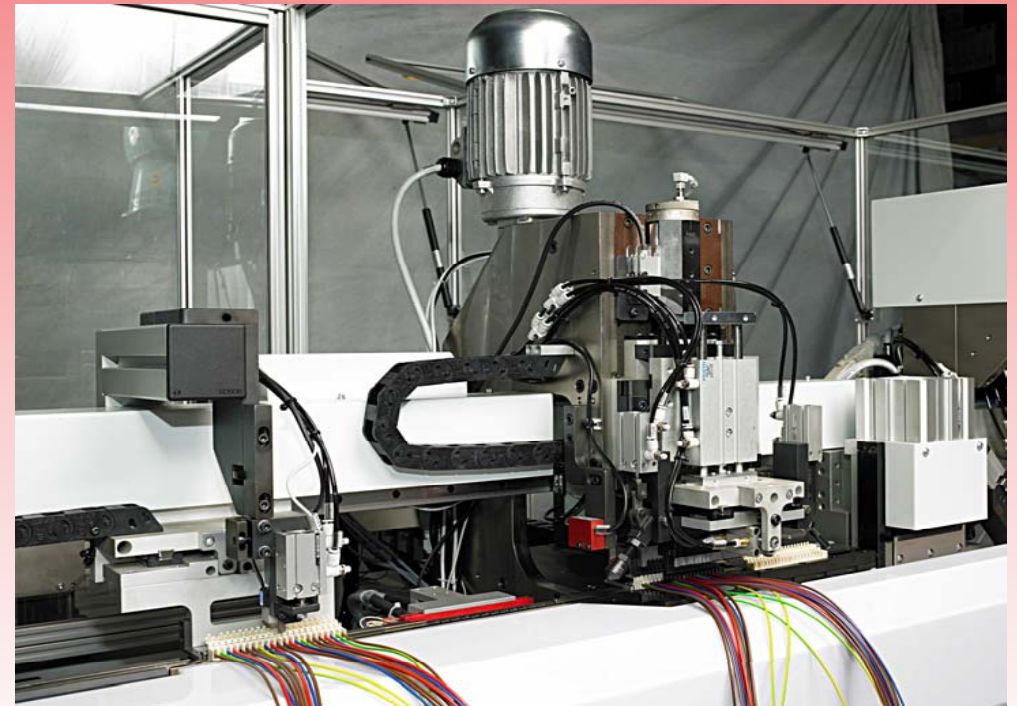
TERMINATION UNIT

- **WIRE INSERTION UNIT**
- **CONNECTOR CLOSING HEIGHT ADJUSTMENT**
- **CONNECTORS TERMINATION**



TEST UNITS

- **LASER DEVICE FOR CORRECT WIRE POSITION INTO THE CONNECTOR**
- **CODING STATION WITH CODING TEST BY LASER**



CONDUCTIVITY TEST

- **ELECTRICAL CONDUCTIVITY**
- **SHORT CIRCUIT DETECTION**



SOFTWARE

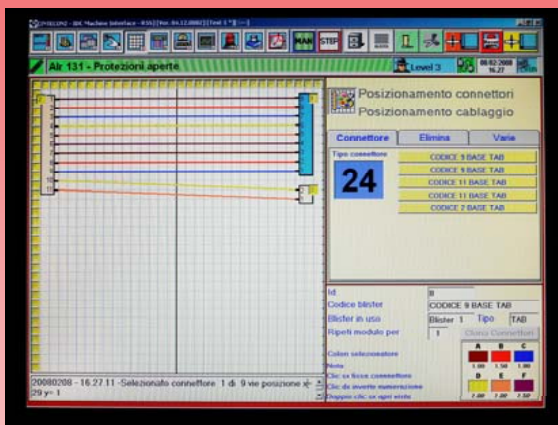


molex[®]

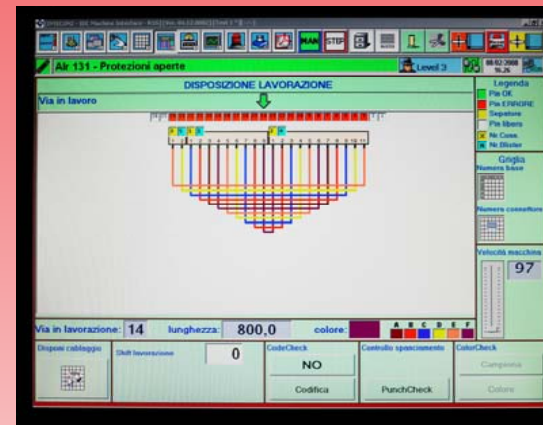


- 1 HARNESS LAYOUT: CIRCUIT CONNECTIONS AND WIRE COLOURS
- 2 HARNESS ON LINE DISPLAYING WITH WIRE PRESENCE TEST
- 3 CONTROL OF CUSTOMER HARNESS CODE AND PRODUCTIVITY
- 4 FEEDING SYSTEM AND WIRE COLOUR SELECTION WITH FEEDING SPEED ADJUSTEMENT

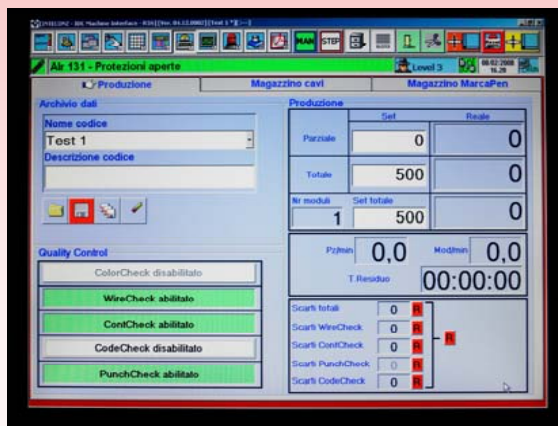
1



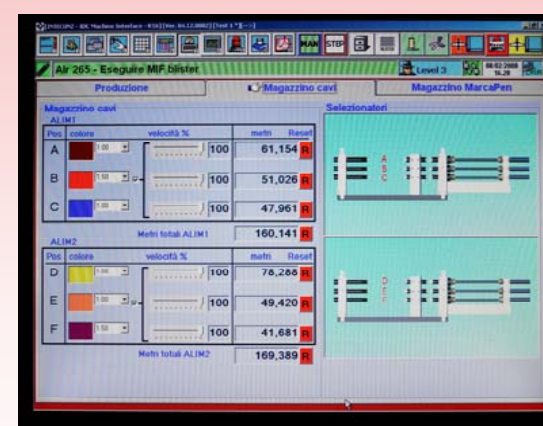
2



3

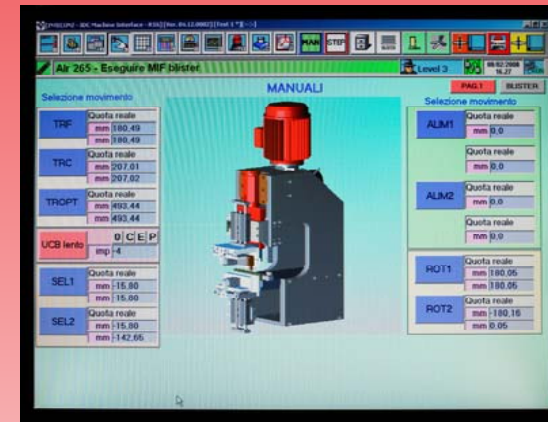


4

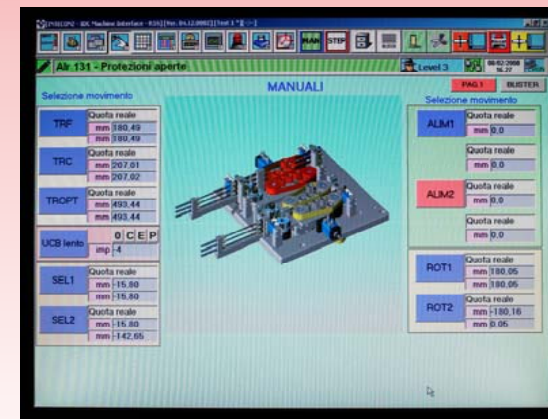


SETUP AND CONTROL OF SINGLE STATIONS

- WIRE INSERTION AND TERMINATION UNIT



- WIRE FEEDING UNIT



PRODUCTIVITY RATE

molex[®]



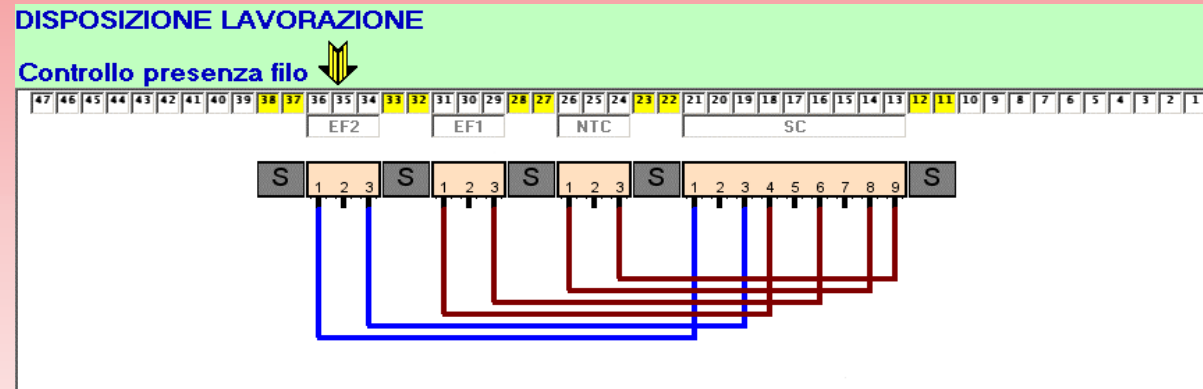
INTECON RAST 2,5 MOLEX

Machine setup:

Machine speed 100%, wire feeding speed 70%

Example: single harness, with 4 connectors, 3 and 9 positions

Production rate = 7 harnesses per minute, 420 complete harnesses per hour



Average speed per wire : 1,4 seconds

Average speed per position: 0,7 seconds

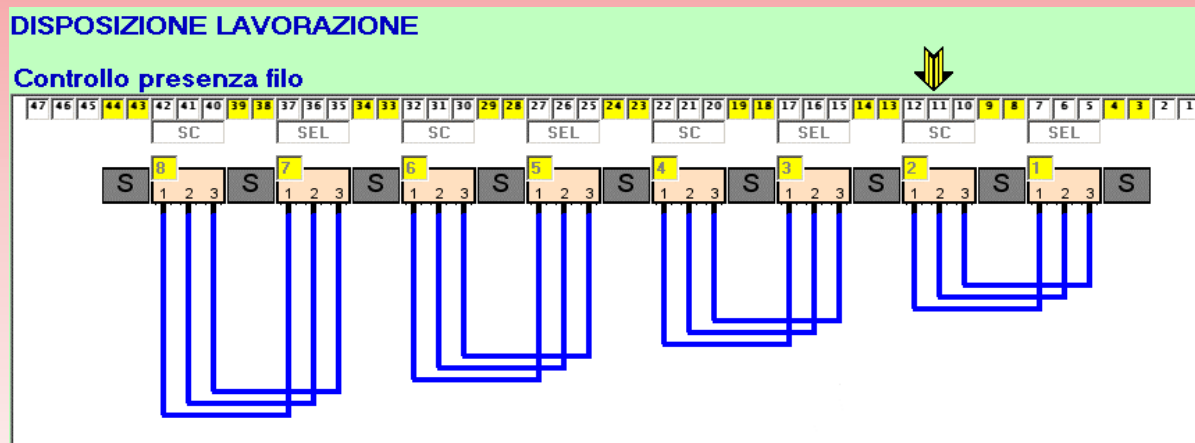
INTECON RAST 2,5 MOLEX

Machine setup:

Machine speed 100%, wire feeding speed 70%

Example: multiple harnesses, with 8 connectors, 3 positions + 3 positions

Production rate: 16 harnesses per minute, 960 complete harnesses per hour



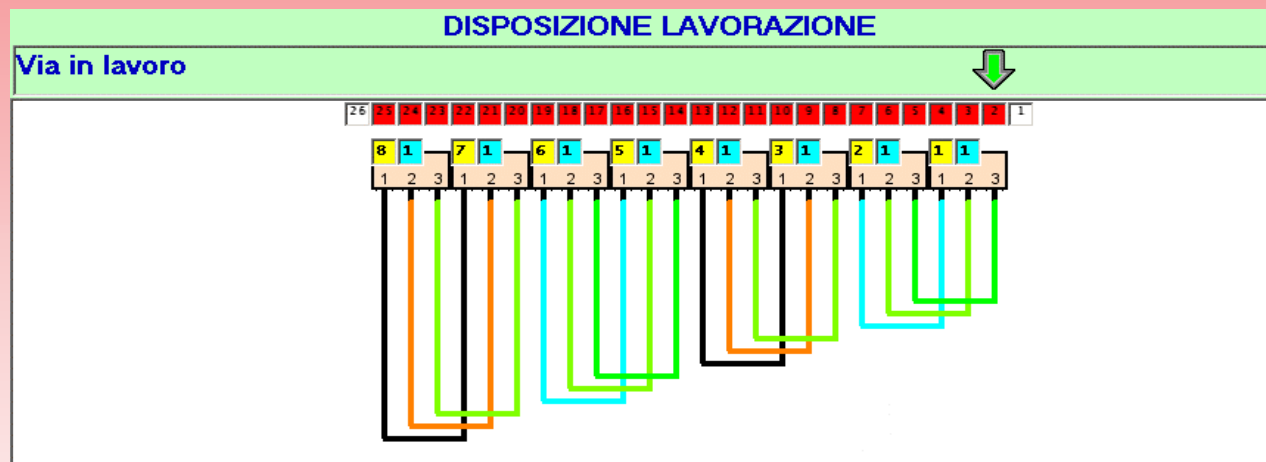
Average speed per wire : 1,2 seconds

Average speed per position : 0,6 seconds

INTECON RAST 5 MOLEX

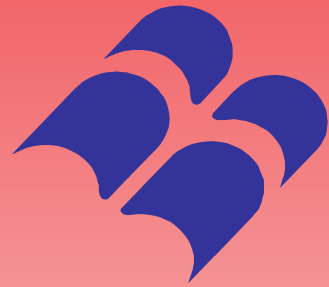
Example: Multiple harnesses with 8 connectors, 3 positions + 3 positions

Production rate: 16 harnesses per minute, 960 complete harnesses per hour



Average speed per wire : 1,25 seconds

Average speed per position: 0,625 seconds



KMI

partner of

molex[®]

InTeCon

is approved by

molex[®]

SALES NETWORK



www.kmi.it